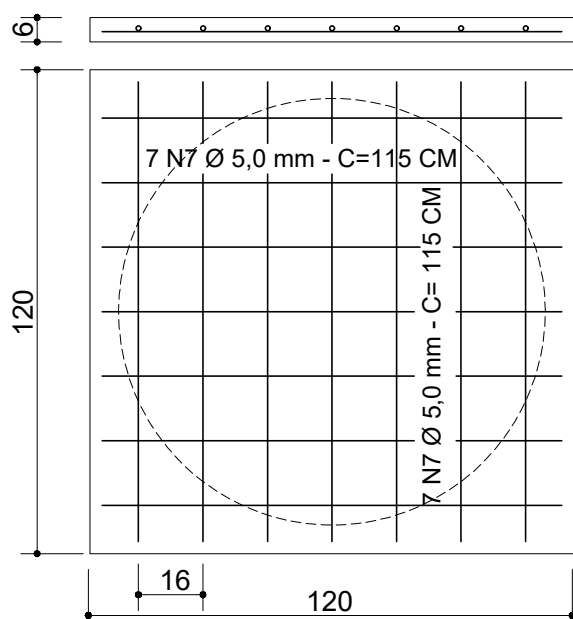
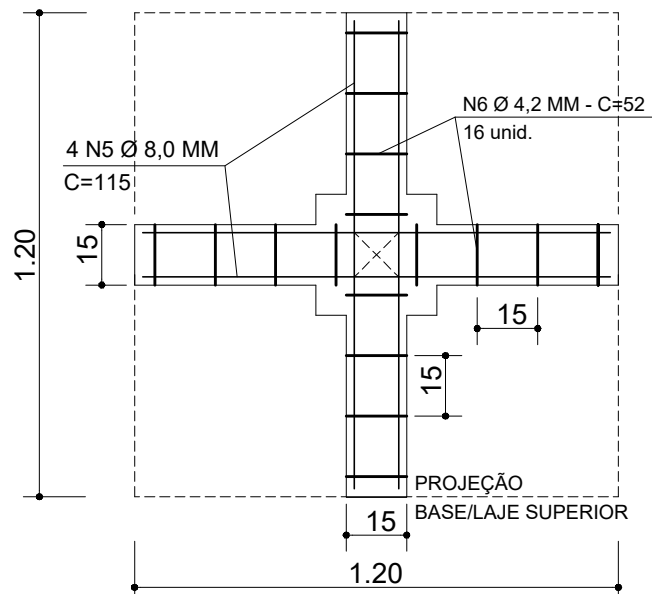


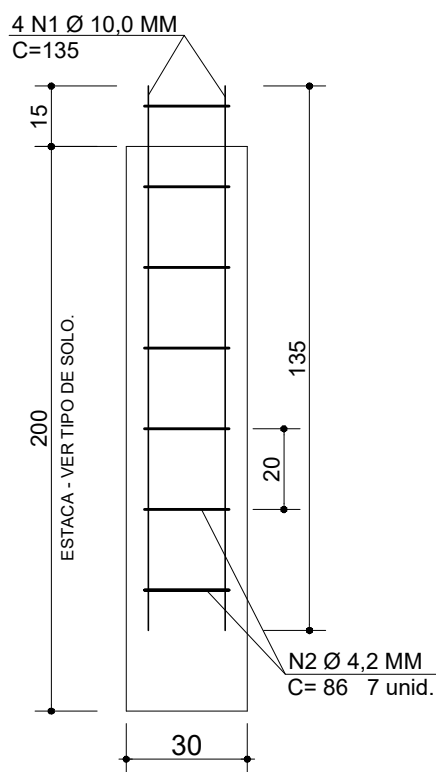
UTILIZAÇÃO		DESCRIPTIVO/FERRAGEM	TOTAL (BARRA 12 m)
ESTRIBOS	N2 - N4 - N6	FERRO CA60 - 4,2 mm (3/16")	3,2 BARRAS/4.18 Kg.
BASE SUPERIOR	N7	FERRO CA60 - 5,0 mm (3/15")	1.5 BARRAS/2.78 Kg.
VIGA SUPERIOR	N5	FERRO CA50 - 8.0 mm (5/16")	0.5 BARRAS/2.40 Kg.
ESTACA/COLUNA	N1 - N3	FERRO CA50 - 10.0 mm (3/8")	2.0 BARRAS/14.81 Kg.



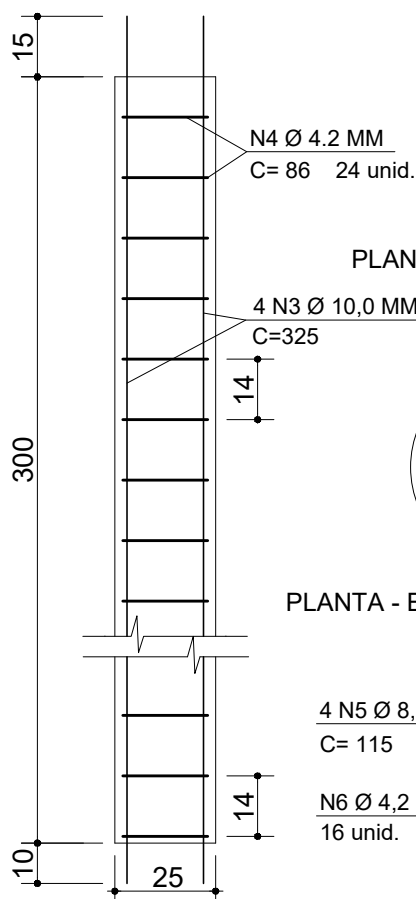
BASE/LAJE SUPERIOR
PLANTA



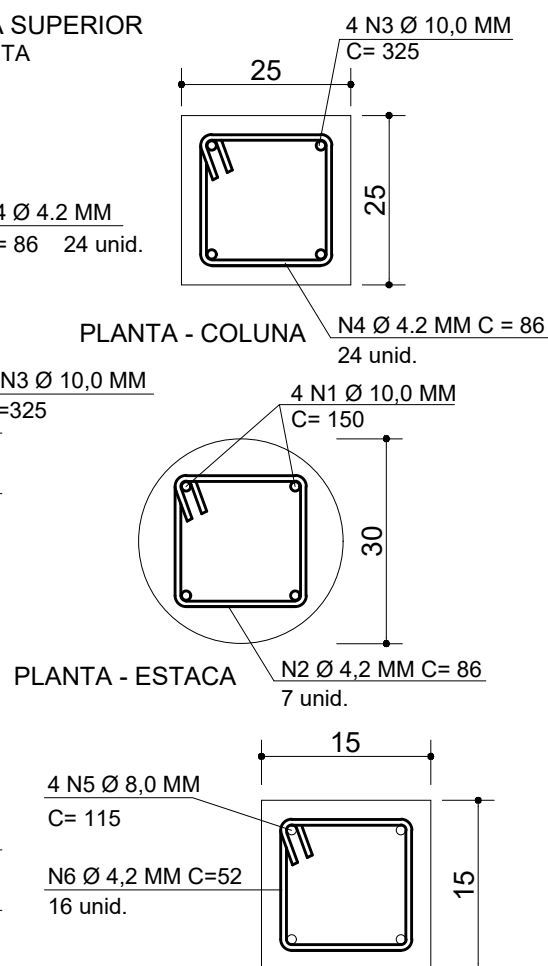
VIGA SUPERIOR
PLANTA



ESTACA



COLUNA



PLANTA - ESTACA

CORTE BB - VIGA/SUPERIOR

NOTA: PARA CALCULO DE ESTACA E USO DO BLOCO DE RESPALDO - OBSERVAR RESISTÊNCIA DO SOLO.