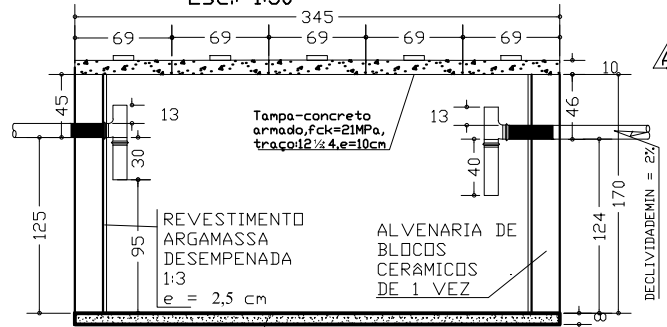
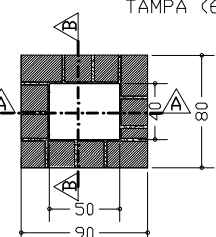


**PLANTA BAIXA-TANQUE SÉPTICO**  
Esc.: 1:50

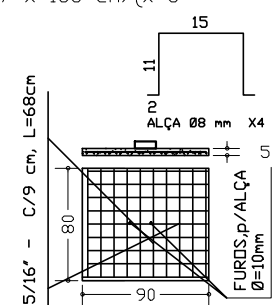


**CORTE DD**  
Esc.: 1:50

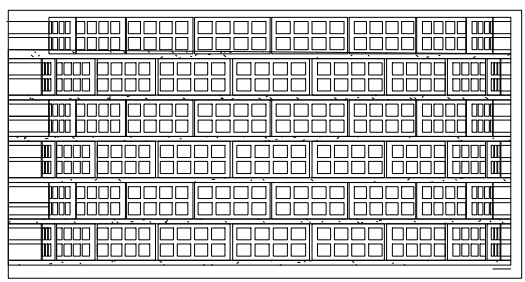
La Je-concreto armado, fck=21MPa, traço: 1 1/2 : 4, e=8cm sendo 10 45/16" - 3,41 c/19cm mata 18 05/16" - 1,91 c/19cm



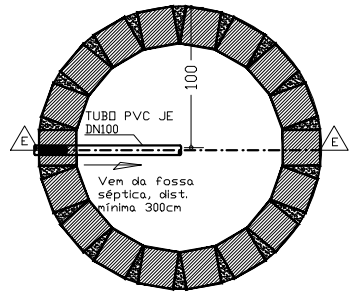
**PLANTA X4**  
Esc.: 1:50



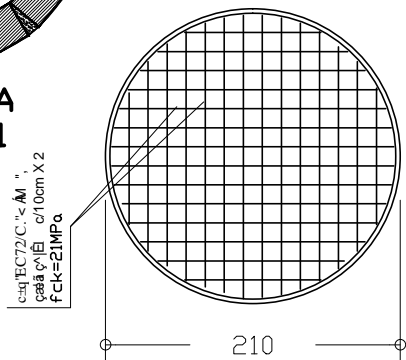
**TAMPA X4**  
Esc.: 1:50



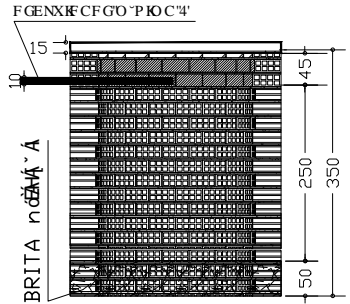
Esc.: 1:50



**PLANTA BAIXA SUMIDOURO X1**  
Esc.: 1:50



**TAMPA X1**  
Esc.: 1:50



**CORTE EE SUMIDOURO**  
Esc.: 1:100

Projeto de <b>HIDRO - SANITÁRIO</b>			
ASSINATURAS			
		AUTOR DO PROJETO Engo Civil :	
NOME E CREA			
ÁREAS (m²)			
TERRENO VARIÁVEL	CONSTRUÍDA 49.980	LIVRE VARIÁVEL	TOTAL 49.980
ASSUNTOS: <b>planta baixa/cortes, cx passagem, tanque séptico e sumidouro</b>			
ESCALAS : INDICADAS	(cotas em cm)	PRANCHA: 7/10	DBRA: RESIDENCIAL UNI-FAMILIAR
DATA: Julho/2013			

**APROVAÇÃO:**